



TrainESEE

Training trainers in East and Southeastern Europe



TrainESEE visibility event for EU universities

Tailor made acceleration
programmes and targeted
beneficiaries

Sibila Borojević Šošarić
Project coordinator

23rd November 2020

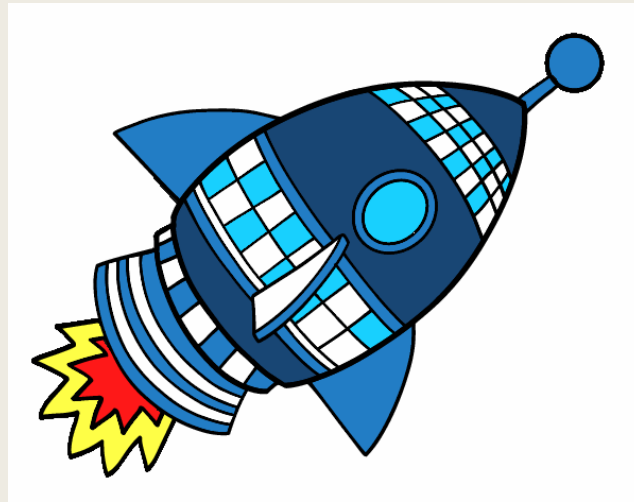
Supported by



www.trainesee2.eu

This activity has received funding from the European Institute of Innovation and Technology (EIT), a body of the European Union, under the Horizon 2020, the EU Framework Programme for Research and Innovation





Acceleration Programme (1)

In our context of TrainESEE,

We call acceleration program to a **collective action-learning process (2)** which allows universities to progress through their **sustainable development (3)** path more quickly than usual

- (1) The original expression “acceleration programme” is used to name a course of study which allows students to progress through their education more quickly than usual.
- (2) Emphasizing the transformational dimension of learning under the TrainESEE courses.
- (3) In the context of TrainESEE, sustainable development refers to the economic, social and environmental dimensions of the four modules subjects, that is, (1) Teaching Methodologies, (2) Project Management & Development, (3) Innovation & Entrepreneurship, and (4) Science to Business.



TrainESEE

Training trainers in East and Southeastern Europe

www.trainesee2.eu



KGHM CUPRUM
CENTRUM BADAWCZO-ROZWOJOWE



MISKOLCI EGYETEM
UNIVERSITY OF MISKOLC



TECHNICKÁ UNIVERZITA V KOŠICIACH

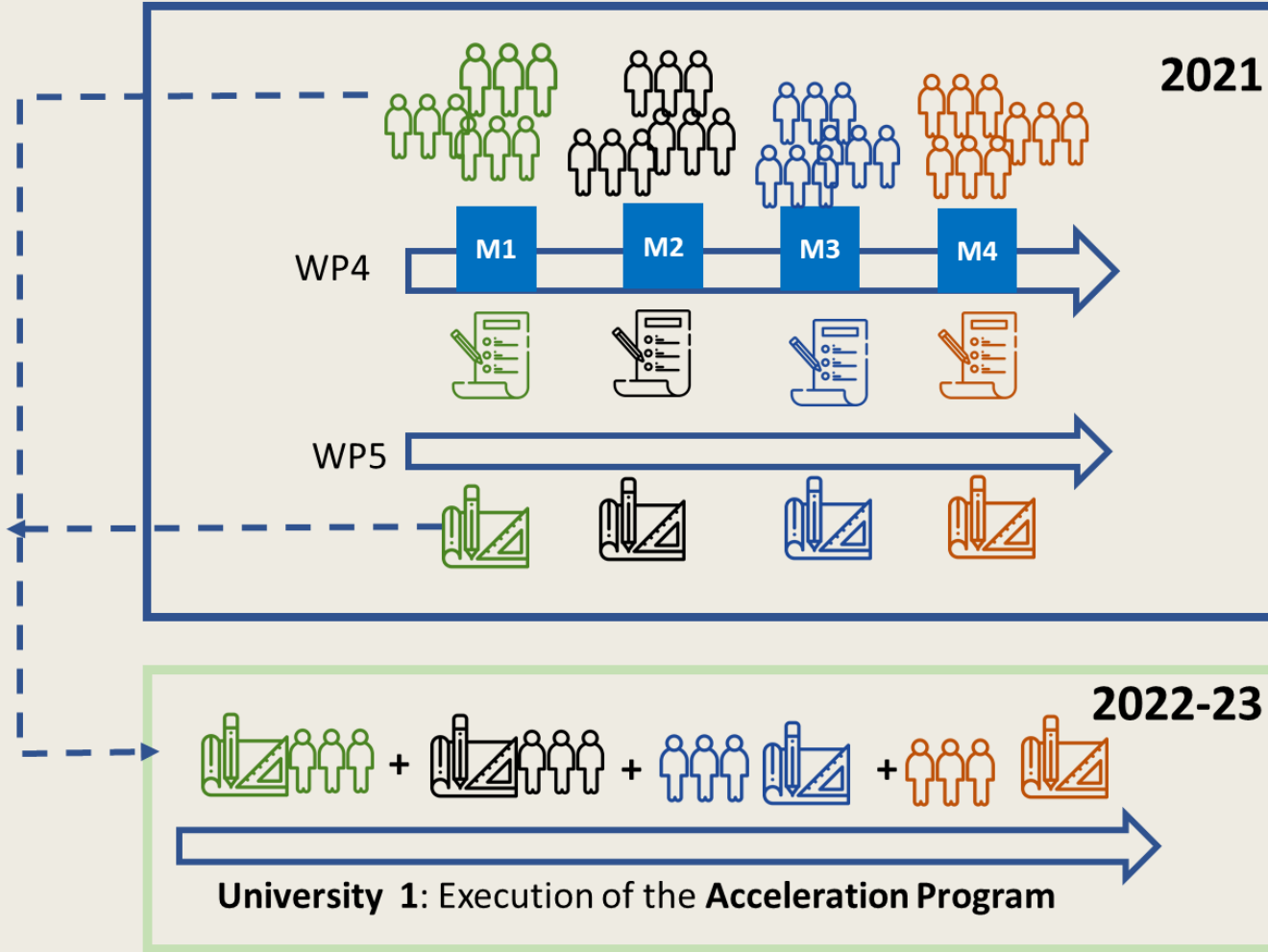


UNIVERSITY OF MINING AND GEOSCIENCES ST. IVAN RILSKI



DNIPRO UNIVERSITY of TECHNOLOGY
1899

Supported by



Acceleration Program: Draft



Acceleration Program: Final





National Technical University of Athens

CENTRUM BADAWCZO-ROZWOOWE



TECHNICKÁ UNIVERZITA V KOŠICIACH



UNIVERSITY OF MINING AND GEOSCIENCES ST. IVAN RILSKI



DNIPRO UNIVERSITY OF TECHNOLOGY 1899

Supported by



Starting points

1. Developed modules (2020)
2. SWOT analyses of each ESEE university (fine-tuning)
3. 2021 workshop experience of the academic staff
4. Current experience on the implementation of the gained knowledge into ongoing university study and research programme

Using existing resources

1. List of potential in-training-country partners/partner organizations interested in supporting of the module (as lecturers, financiers, providers of case-studies or best-case practice etc)
2. List of CEEPUS and Erasmus mobility agreement – serving as supplementary trainers mobility support among partner institutions
3. List of bilateral agreement on cooperation/memorandums of understanding relevant for training needs
4. List of other potential supports for the programmes.



Targeted beneficiaries

www.trainesee2.eu



National Technical University of Athens

KGHM CUPRUM

CENTRUM BADAWCZO-ROZWOOWE



MISKOLCI EGYETEM
UNIVERSITY OF MISKOLC

A? Aalto University



TECHNICKÁ UNIVERZITA V KOŠICIACH



UNIVERSITY OF MINING AND GEOSCIENCES ST. IVAN RILSKI



DNIPRO UNIVERSITY of TECHNOLOGY 1899

ESEE universities and academic RM-related study programmes

Students enrolled at RM programmes

Sector specific industry from ESEE region

Supported by





Targeted beneficiaries

Teaching methodology module

- English teachers, content teachers of the specific internationally attractive programmes and mobility-active teachers

Project development and management module

- Young to medium aged researchers including post-docs and younger teaching staff

Innovation and Entrepreneurship module

- Content teachers in core Raw Materials courses

Science to Business module

- Academic idea-holders

Estimated impact (6 ESEE Universities) Modules Teaching methodology and Innovation & entrepreneurial skills

Table 5: Calculated impact of the Train ESEE v.2 and supplementary accelerating programmes at 6 universities - modules Teaching methodology and Innovation & entrepreneurial skills. Estimation is based on 50% of success rate at a level of course implementation and 25% of success rate at a level of student benefiting the changes.

Year of the programme	No. of participating staff	Percentage of participating staff (average)	Estimated No. of courses improved	Estimated % of courses improved	Minimum No. of students benefiting	Minimum % of students benefiting
Year 1 (2021)	40	6,0%	32	3,0%	60	1,5%
Accelerating programmes						
Year 2 (2022)	40	12,1%	64	6,0%	119	3,0%
Year 3 (2023)	40	18,1%	96	9,1%	179	4,5%
Year 4 (2024)	40	24,2%	129	12,1%	239	6,0%



Supported by



Estimated impact (6 ESEE Universities)

Modules: Project development and management and Science to Business

Table 6: Calculated impact of the Train ESEE v.2 and supplementary accelerating programmes at 6 universities - modules Project development and management and Science to Business competences. Estimation is based on 50% success rate of implementation.

Year of the programme	No. of participating staff	Percentage of participating staff (average)	Estimated numbers given for 6 participating universities		
			Annual No. of project applications	No. of new project applications (IMPACT)	Increase of new project applications % (IMPACT)
Year 1 (2021)	40	6,0%	215	6	3,0%
Accelerating programmes					
Year 2 (2022)	40	12,1%	221	13	6,0%
Year 3 (2023)	40	18,1%	234	21	9,1%
Year 4 (2024)	40	24,2%	256	31	12,1%





TrainESEE

Training trainers in East and Southeastern Europe

www.trainesee2.eu



National Technical University of Athens

KGHM CUPRUM

CENTRUM BADAWCZO-ROZWOOWE



MISKOLCI EGYETEM
UNIVERSITY OF MISKOLC



Aalto University



AGH



TECHNICKÁ UNIVERZITA V KOŠICIACH



UNIVERSITY OF MINING AND GEOSCIENCES
ST. IVAN RILSKI



DNIPRO UNIVERSITY of TECHNOLOGY
1899

Join us and increase the impact of the 4 developed modules!

Supported by



This activity has received funding from the European Institute of Innovation and Technology (EIT), a body of the European Union, under the Horizon 2020, the EU Framework Programme for Research and Innovation

